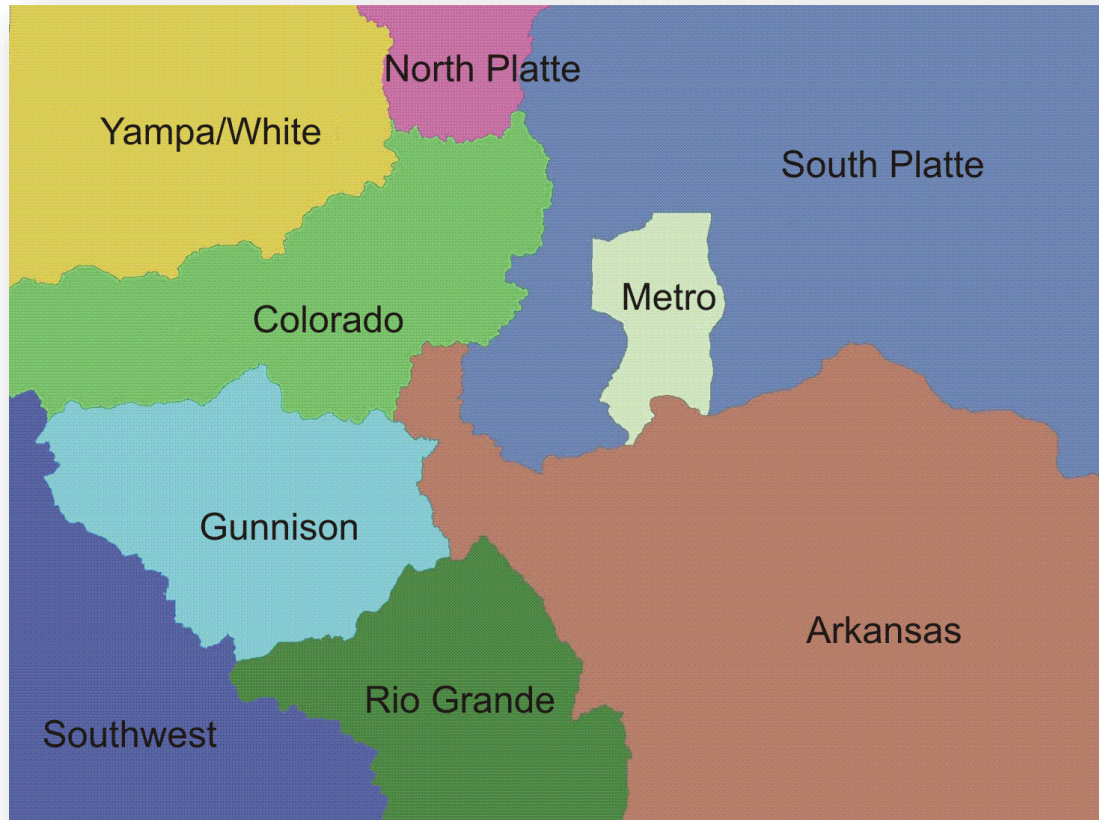


South Platte Basin Roundtable & The Regional Concept

All you need to know in 10 minutes!

HB05-1177 (2005) Water for the 21st Century Act 9 Basin Roundtables



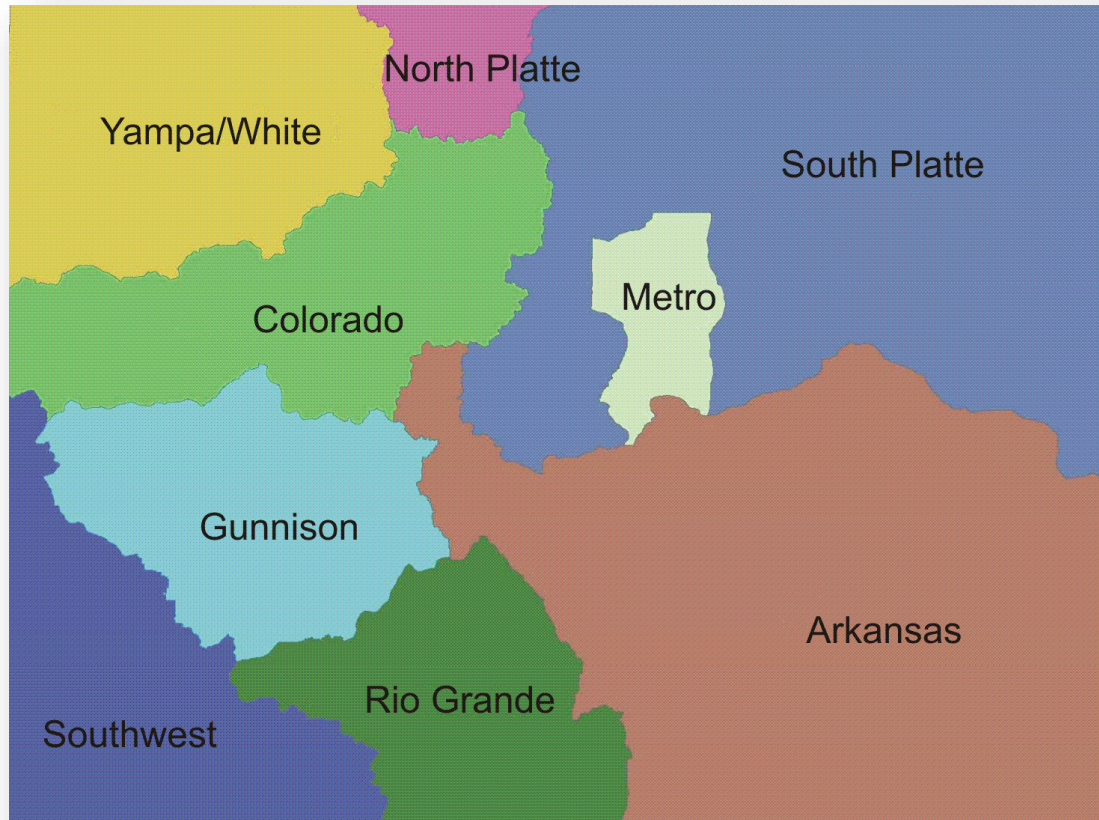
TO FACILITATE
CONTINUED
DISCUSSIONS WITHIN
AND BETWEEN BASINS
ON WATER
MANAGEMENT ISSUES,
AND TO ENCOURAGE
LOCALLY DRIVEN
COLLABORATIVE
SOLUTIONS TO WATER
SUPPLY CHALLENGES...

HB05-1177 (2005) Water for the 21st Century Act 9 Basin Roundtables



DEVELOP A BASIN-WIDE
CONSUMPTIVE AND
NONCONSUMPTIVE WATER
SUPPLY NEEDS
ASSESSMENT, CONDUCT AN
ANALYSIS OF AVAILABLE
UNAPPROPRIATED WATERS
WITHIN THE BASIN, AND
PROPOSE PROJECTS OR
METHODS, BOTH
STRUCTURAL AND
NONSTRUCTURAL, FOR
MEETING THOSE NEEDS
AND UTILIZING THOSE
UNAPPROPRIATED WATERS
WHERE APPROPRIATE.

HB05-1177 (2005) Water for the 21st Century Act 9 Basin Roundtables



BASIN ROUNDTABLES SHALL ACTIVELY SEEK THE INPUT AND ADVICE OF AFFECTED LOCAL GOVERNMENTS, WATER PROVIDERS, AND OTHER INTERESTED STAKEHOLDERS AND PERSONS IN ESTABLISHING ITS NEEDS ASSESSMENT, AND SHALL PROPOSE PROJECTS OR METHODS FOR MEETING THOSE NEEDS.

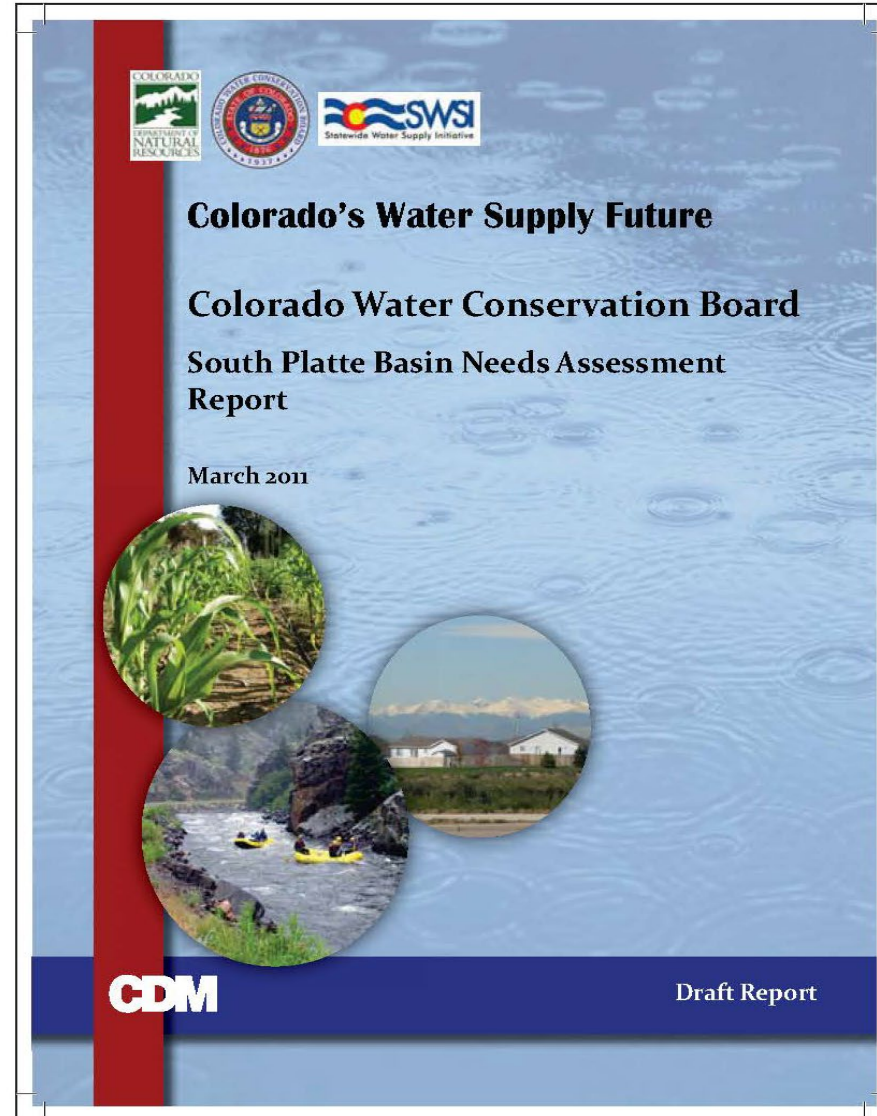
Who – South Platte Basin Roundtable

South Platte Roundtable Seat	Name	Affiliation
Agricultural Representative	Gene Manuello	Colorado Cattlemen's Association
Arapahoe County	Julio Iturreria	Arapahoe County
At Large Representative	Douglas Rademacher	Weld County
At Large Representative	Doug Robotham	The Nature Conservancy
At-Large Representative	Gary Herman	Central Water Water Conservancy District
At-Large Representative	Mike Shimmin	Vranesh and Raisch,LLP Attorneys at Law
At-Large Representative	Jim Yahn	North Sterling Irrigation District
Boulder County	Karen Martinez	Boulder County
Boulder Muni	Ken Huson	City of Longmont
Broomfield	Stephen Larson	City of Broomfield
Center of Colorado Conservancy District	Lisa McVicker	Center of Colorado Conservancy District
Central CO Water Conservancy District	Frank Eckhardt	Central Colorado Water Conservancy District
Cheyenne County	Leon Allen	Cheyenne County
Clear Creek County/South Platte Liaison	Bert Weaver	Clear Creek County/South Platte Liaison
El Paso County	Kevin Lusk	El Paso County
Elbert County Rep.	Larry Ross	Elbert County
Elbert Muni	Clay Hurst	Hurst and Associates
Environmental Representative	Bob Streeter	Colorado Trout Unlimited
Gilpin County	Connie McLain	Gilpin County
Gilpin Municipality	James Ford	City of Blackhawk
Industrial Representative	Rich Belt	Xcel Energy
Jefferson County	John Wolforth	Jefferson County
Jefferson Muni	Bill Ray	City of Arvada
Kit Carson Muni	Richard Mann	Town of Stratton
Larimer County Rep	Jeffrey Boring	Larimer County
Larimer Muni	Larry Howard	City of Loveland
Legislative Appointment	John Stencil	
Local Domestic Water Provider	Jim Hall	City of Greeley
Logan County	Kent Swedlund	

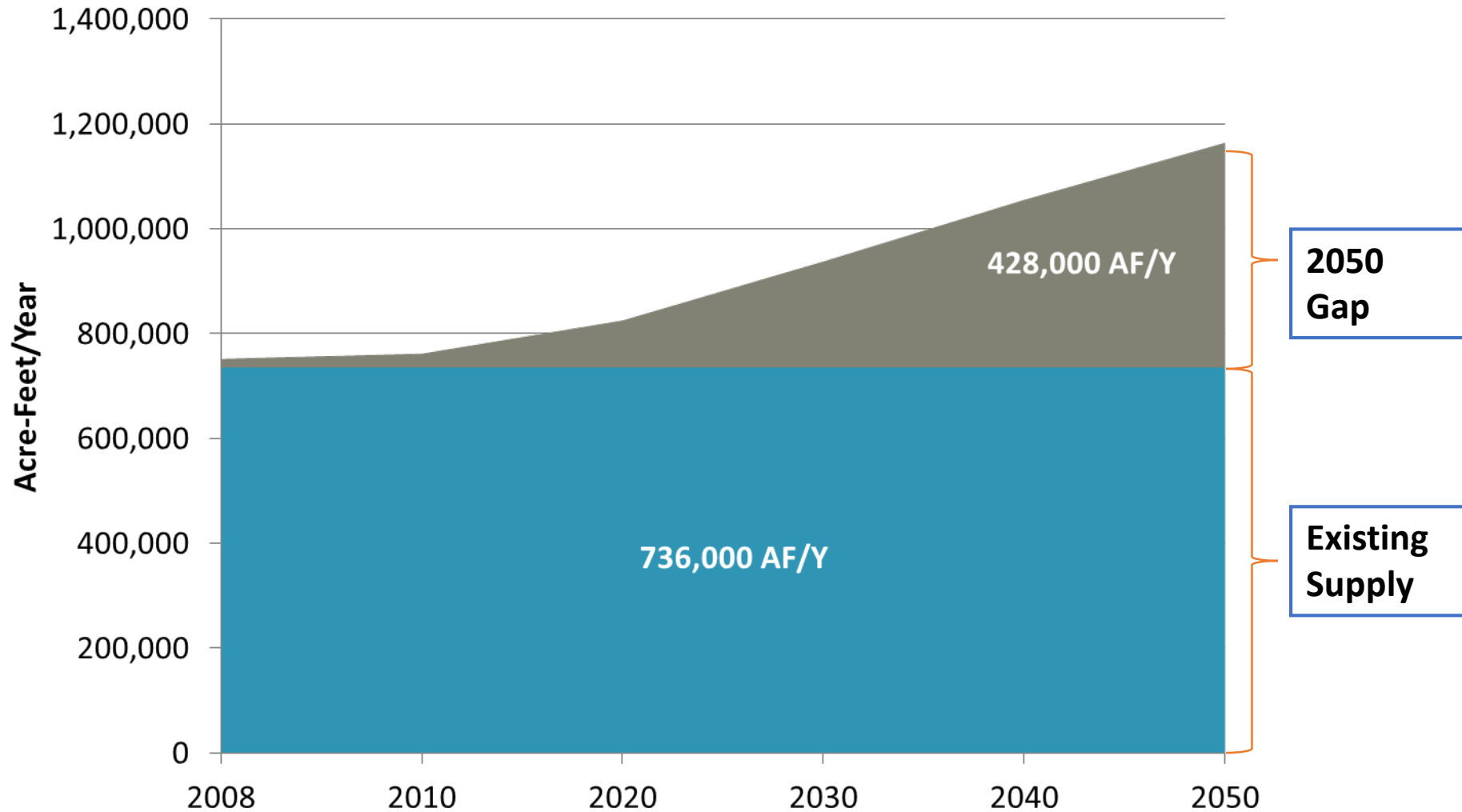
Who – SP Roundtable Cont...

Logan Muni	Bob Brown	City of Sterling
Lower South Platte Water Conservancy District	Joe Frank	Lower South Platte Water Conservancy District
Morgan County	Allyn Wind	
Morgan Muni	Brent Nation	Fort Morgan Utilities/Water Resources
Northern Colorado Water Conservancy District	Mike Applegate	Applegate Group
Park County	Mike Brazell	Park County
Park Muni	Earl Mortemeyer	
Recreational Representative	Greg Kernohan	Ducks Unlimited
Republican River Water Conservation District	Eugene Bauerle	Republican River Water Conservation District
Sedgwick County	Chuck Powell	
Sedgwick Muni	Bruce Gerk	Colorado Rural Electric Association
St. Vrain & Left Hand Water Conservancy District	Sean Cronin	St. Vrain and Left Hand Water Conservancy District
Teller County	Bill Buckhanan	Teller County
Upper South Platte Water Conservancy District	Lynda James	Upper South Platte Water Conservancy District
Weld County	Sean Conway	Weld County
Weld County Municipal	Harold Evans	Eans Group, LLC
Yuma County	Robin Wiley	Yuma County
Yuma Muni	Stan Holmes	Yuma County
CWCB Member	Diane Hoppe	Colorado Water Conservation Board
Non-Voting At Large Member	Brett Gracely	Colorado State University
Non-Voting At Large Member	Dave Little	Denver Water
Non-Voting At Large Member	Randy Ray	Central Colorado Water Conservancy District
Non-Voting At Large Member	Eric Wilkinson	Northern Colorado Water Conservancy District
BOR (liaison)	James VanShaar	Bureau of Reclamation
CO. Water Quality Control Division(liaison)	Randal Ristau	Colorado Water Quality Control Division
CSU Extension Service (liaison)	Dennis Kaan	CSU Extension Service
CSU Extension Service (liaison)	Joel Schneekloth	CSU Extension Service
Division of Wildlife(liaison)	Pete Conovitz	Unites States Division of Wildlife
Division of Wildlife(liaison)	Ed Perkins	Unites States Division of Wildlife
Division of Wildlife(liaison)	Jay Skinner	Unites States Division of Wildlife
Forest Service (liaison)	Carl Chambers	Unites States Forest Service
U.S. Army Corps of Engineers (liaison)	Fred Rios	United States Army Corps of Engineers
Deputy Recorder	Matt Betz	St. Vrain and Left Hand Water Conservancy District

South Platte Basin Needs Assessment



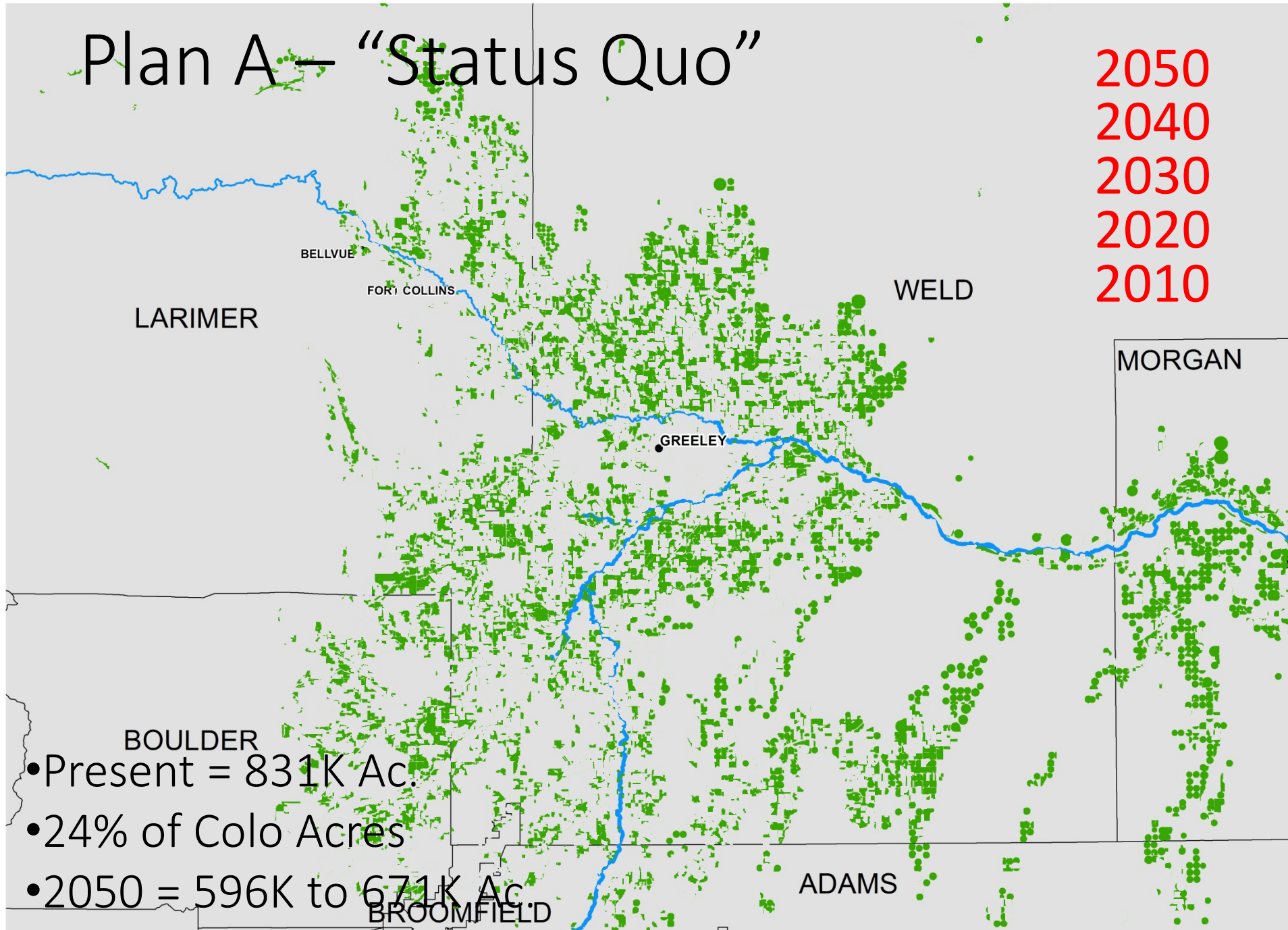
Municipal & Industrial (M&I) Water Supply Gap in the South Platte Basin



*Based on SWSI 2010 Medium Water Demands

Plan A – “Status Quo”

2050
2040
2030
2020
2010



- Present = 831K Ac.
- 24% of Colo Acres
- 2050 = 596K to 671K Ac

STATE OF COLORADO

OFFICE OF THE GOVERNOR

136 State Capitol Building
Denver, Colorado 80203
Phone (303) 866-2471
Fax (303) 866-2003



John W. Hickenlooper
Governor

D 2013-005

EXECUTIVE ORDER

DIRECTING THE COLORADO WATER CONSERVATION BOARD TO COMMENCE WORK ON THE COLORADO WATER PLAN

Pursuant to the authority vested in the Governor of the State of Colorado, and in particular, pursuant to powers vested in the Governor pursuant to article IV, section 2 of the Colorado Constitution, I, John W. Hickenlooper, Governor of the State of Colorado, hereby direct the Colorado Water Conservation Board to commence work on the Colorado Water Plan.

I. Background

Colorado has long been on the leading edge of water innovation and solutions. We are the home of the "Colorado Doctrine" of prior appropriation and the birthplace of the interstate water compact, of which we have nine. We are a headwater state – vital rivers and streams begin here, provide water to Colorado uses, and exit to water 18 downstream states as well as the United Mexican States. Colorado has benefited much from its water and has taken seriously its responsibilities as a headwater state. The creation of a Colorado Water Plan is in keeping with Colorado's water heritage and continued responsibility.

The Colorado Water Conservation Board (CWCB) was created in 1937 "[f]or the purpose of aiding in the protection and development of the waters of the state, for the benefit of the present and future inhabitants of the state." C.R.S. § 37-60-102. More than 75 years later, we reaffirm this purpose and seek to tap Colorado collaboration and innovation in addressing our water challenges. The Board's recently-adopted strategic framework is consistent with this mission.

We also recognize the important role the Office of the State Engineer has played throughout Colorado's water history. This office administers water rights, issues water well permits, represents Colorado in certain interstate water compact proceedings, monitors streamflow and water use, approves construction and repair of dams and performs dam safety inspections, assures the safe and proper construction of water wells, and maintains numerous databases of state water information.

The Interbasin Compact Committee and Basin Roundtable processes, established by House Bill 05-1177, have produced more than eight years worth of important discussion and information about the basins from Coloradans in each basin.

May 14, 2013 – Governor Hickenlooper issued Executive Order

- “The South Platte Basin is our largest agriculture producing basin” and “Coloradans [emphasis] find the current rate of buy and dry is unacceptable [emphasis added]”
- “When drafting the Colorado Water Plan, the CWCB is directed to utilize...the Basin Roundtables...and build upon points of consensus...”

So the Roundtable put together its points of consensus

11 SP BIP Elements

1. Maximize Implementation of Identified Projects and Processes
2. Conservation
 - A. Maintain Leadership in M&I Conservation
 - B. Maintain Leadership in Reuse**
- 3. Maximize effective use of South Platte Supplies**

11 SP BIP Elements Cont...

- 4. Minimize traditional agricultural buy and dry – use ATMs where practical**
- 5. Protect and enhance environmental and recreational attributes**
6. Simultaneously advance new Colorado River supply options
7. Manage risk of climate change impacts

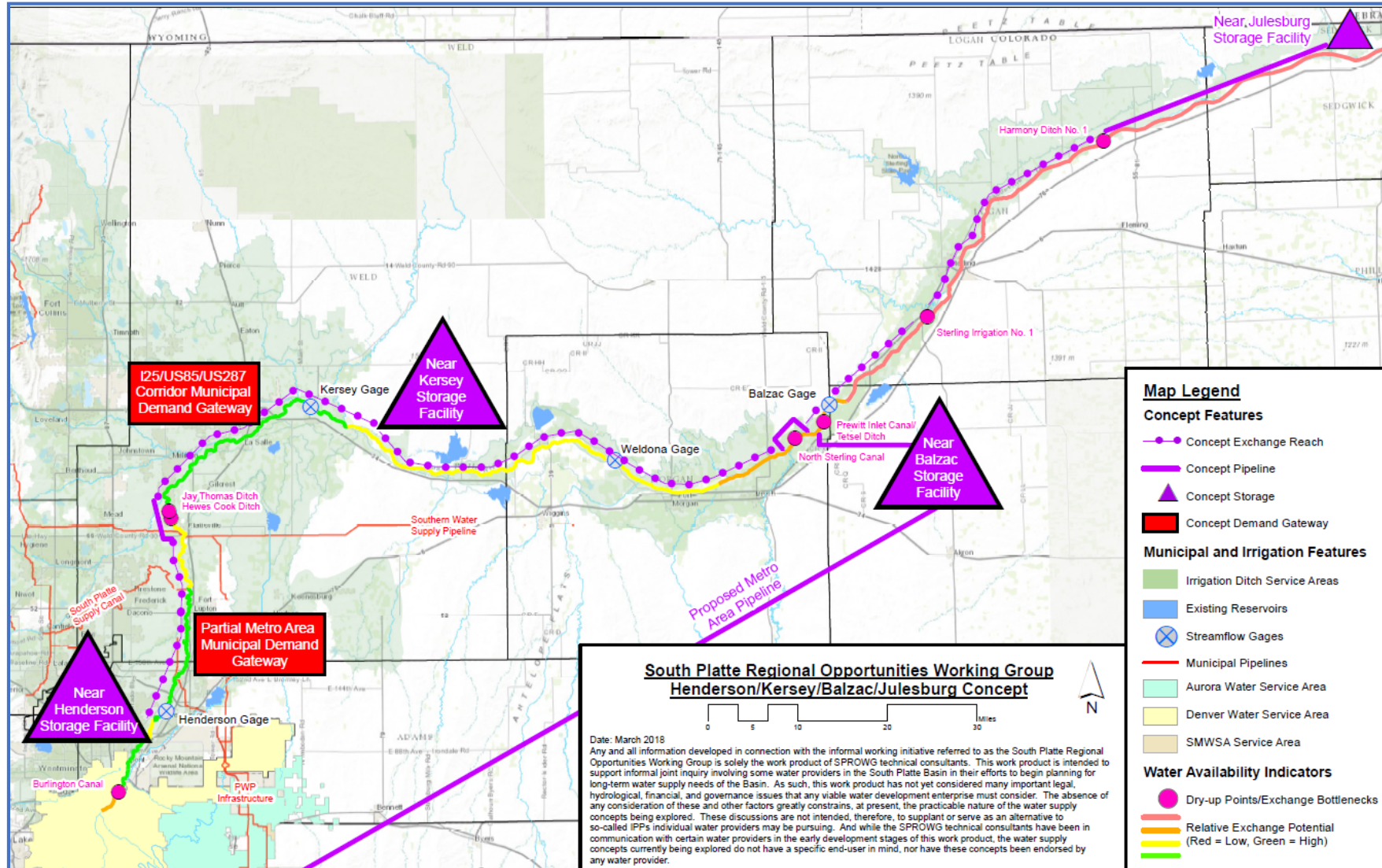
11 SP BIP Elements Cont...

- 8. Promote multipurpose storage projects that enhance other South Platte Basin solutions**
9. Facilitate effective South Platte communication and outreach programs
10. Research new technologies and strategies
11. Advocate for improvements to federal and state permitting processes

South Platte Regional Opportunities Working Grop SPROWG

- Regional water providers came together in 2015 to investigate regional supply concepts
- Took off agency hats
- Why?
 - Maximize use and effectiveness of available water on South Platte
 - Minimize traditional agricultural “buy and dry”
 - Evaluate cooperative, multi-purpose/user supply projects to fill Ag and M&I gap.

SPROWG Concept



SPROWG Supplies

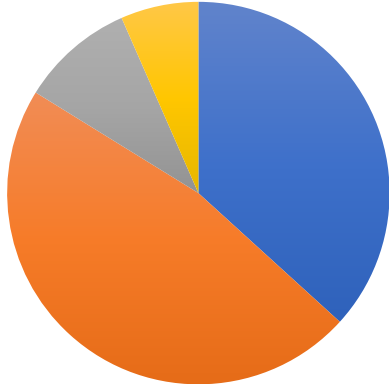




Single Facility Concept

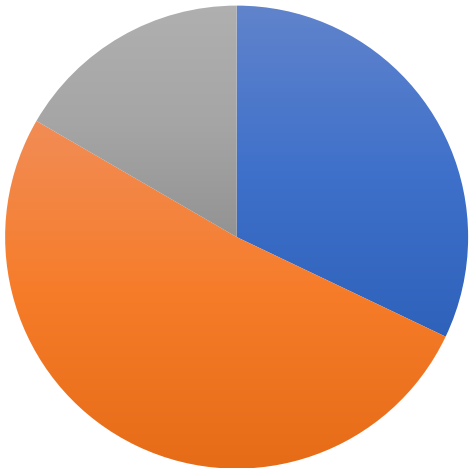
Three Facilities Concept

Project Supplies

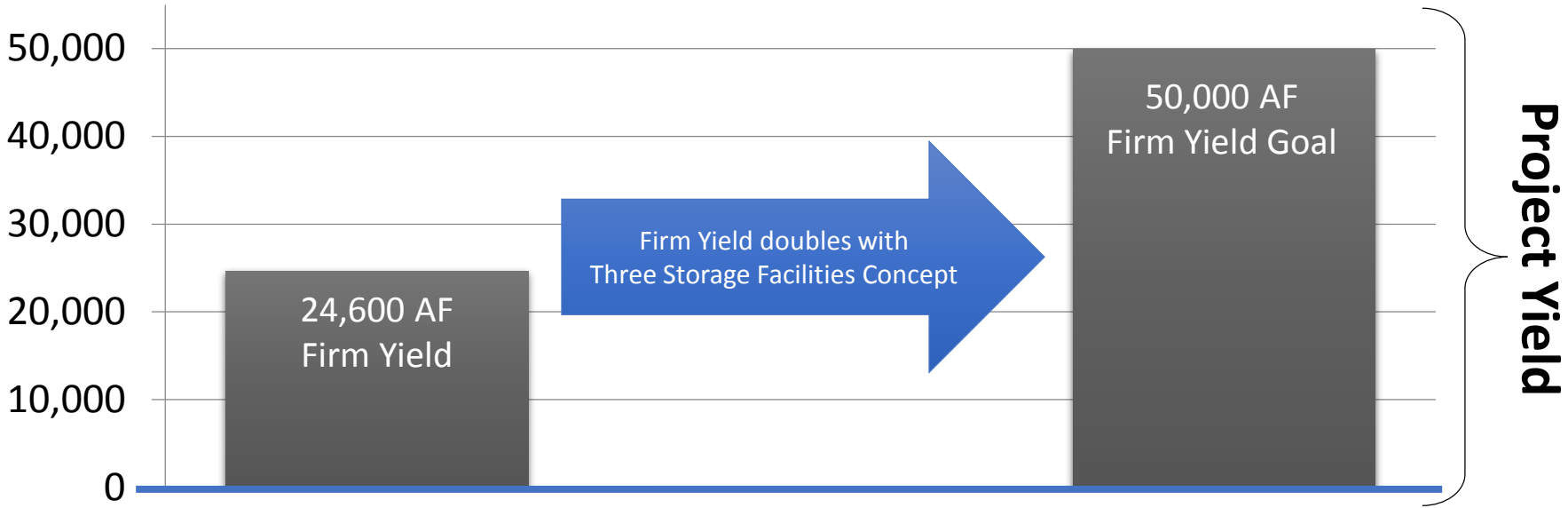


Total Supplies = 47,000 AF
Annually on Average

- Legally reusable supplies
- Unappropriated natural flow
- ATMs/Surplus recharge credits
- Denver Basin non-tributary GW



Total Supplies = 62,500 AF
Annually on Average



Project Yield

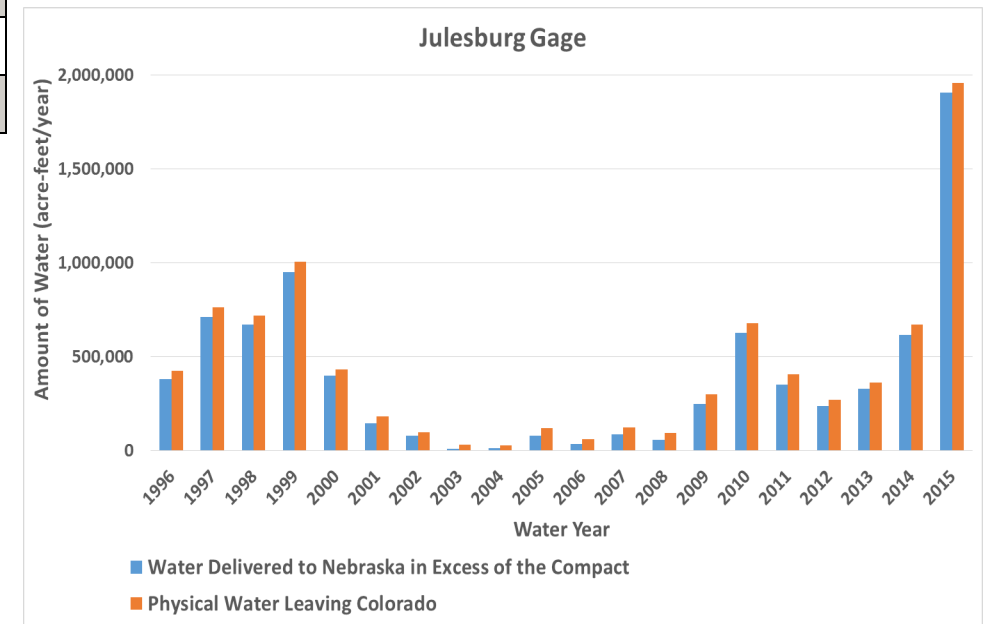
South Platte Storage Study

Statistic	Physical Water Leaving Colorado (Julesburg Gage)	Water Delivered to Nebraska in Excess of the Compact ⁽¹⁾⁽²⁾
Annual Median (ac-ft/yr)	331,000	293,000
Annual Average (ac-ft/yr)	436,000	397,000
Minimum Year (ac-ft/yr)	29,000	10,000
Maximum Year (ac-ft/yr)	1,957,000	1,904,000
Total for 20-yr Period 1996-2015 (ac-ft)	8,728,000	7,939,000

(1) Storable flow Julesburg gage

(2) Future environmental flow obligations could reduce legally available water.

**Nearly 300,000 AFY
could have been
diverted over the past
20 years**

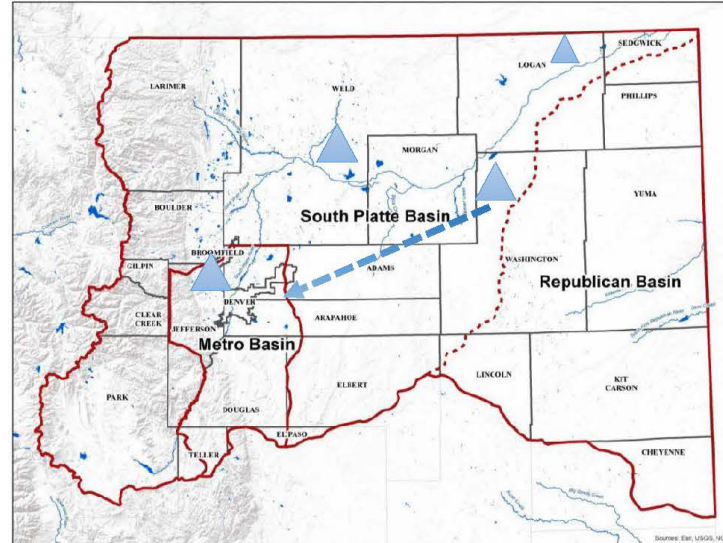


SOUTH PLATTE RIVER BASIN

WATER DEVELOPMENT CONCEPT WORKSHOPS

WHO: Water providers and stakeholders in the South Platte River basin interested in a regional water management and storage project.

WHAT: Workshops detailing various project concepts to develop renewable, in-basin water supplies for municipal, agricultural, environmental, and recreational purposes.



WHEN & WHERE:

May 10
1:30 PM – 3:30 PM
State of Colorado
Centennial Building, Room 318
1313 Sherman Street, Denver

OR

May 15
3:00 PM – 5:30 PM
Northern Colorado Water
Conservancy District
220 Water Avenue, Berthoud

WHY: As outlined in the South Platte/Metro Basin Implementation Plan, regional cooperative, multi-purposed projects will need to be developed to help reduce the gap between existing water supplies and future water demands even after currently planned projects have been constructed.

For more information please contact:

Lisa Darling at South Metro Water Supply Authority (720-216-5158) or
Jim Hall at Northern Colorado Water Conservancy District (800-369-7246)



What needs to be done?

- **Develop organizational/institutional structure** to construct, own, and operate Regional Concept (WSRF application task 2)
- **Refine projected unmet M&I and Ag demands** that could be served by Regional Concept (WSRF application tasks 3 & 4)
- **Refine targeted Env. / Rec. attributes** & their water supply needs that could be served by Regional Concept (WSRF application task 5)



What needs to be done?

- Refine understanding of water quality issues and how to address them efficiently (WSRF application task 6)
- Determine if adjustments to Regional Concept's configuration are needed and re-model (WSRF application task 7)
- Refine / add precision to existing preliminary cost estimates (WSRF application task 9)
- Continue and expand outreach / communication (WSRF application tasks 1 and 8)

Proposed path forward

- Hired Consulting Team
- Task Force of 64 people to work with consultants
 - Advisory Committee
 - Subcommittees
 - Agricultural
 - Municipal and Industrial
 - Environmental and Recreation
 - Education and Outreach
- Multiple Outreach Meetings
 - Stay Engaged!

Have you been to a roundtable meeting?

When: 2nd Tuesday of the month

Where: Southwest Weld Co.
Bld. 4209 WCR 24 1/2

Open to the public